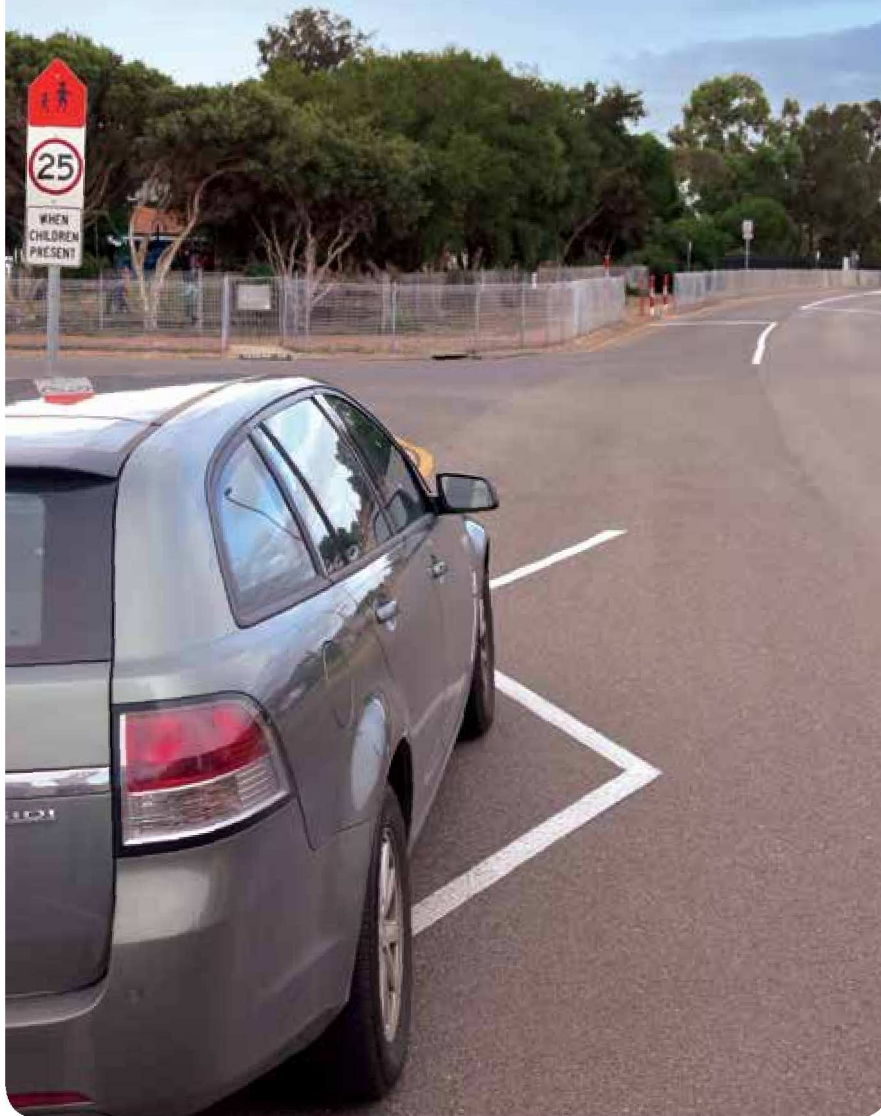


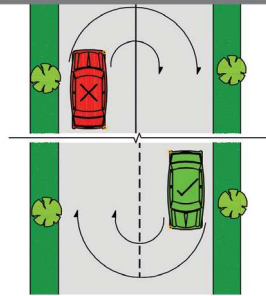
A guide to parking around schools

in the City of Port Adelaide Enfield



U-Turns

Aust Road Rule 39

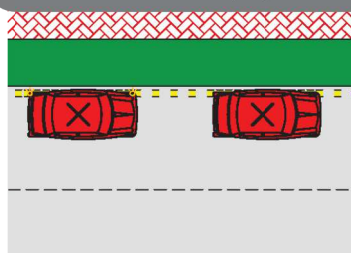


Requirement:

- A vehicle must not u-turn across a solid (unbroken) white line centreline.
- A vehicle is permitted to u-turn when it is safe to do so and when the white centreline is broken.

Broken Yellow Lines

Aust Road Rule 197 (1A)

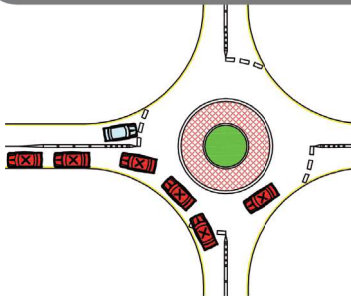


Requirement:

- A broken yellow line indicates No Stopping during restricted times.
- A driver must not stop in a broken yellow line around schools during pick up or drop off times.

Roundabouts

Aust Road Rule 113



Requirement:

- All vehicles must keep a roundabout clear at all times.
- Drivers must give-way to the right.
- Vehicles must not stop or park in a roundabout for any reason.

Keep children safe around schools

To make life safer and easier for children around schools please comply with the relevant Australian Road Rules in this brochure. We all have a responsibility to share the road with others and when it comes to child safety, there are some simple rules we all should follow.

Safe, sensible and thoughtful parking is a sign of community respect.

Thank you for your consideration and cooperation.



CITY OF
Port Adelaide Enfield

Civic Centre

163 St Vincent St, Port Adelaide

Tel: 8405 6600

www.portenf.sa.gov.au

customer.service@portenf.sa.gov.au

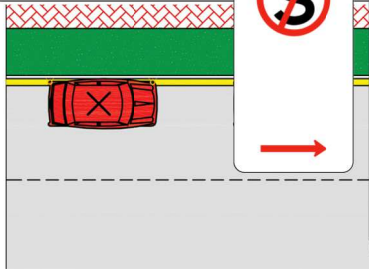
Disclaimer Whilst every effort is made to report community information fairly and accurately, the Council accepts no responsibility for any errors or omissions which may occur. This information is provided as a general guide and should not be taken as legal advice.

Safety around schools in the City of Port Adelaide Enfield

To achieve a safer environment for your children please adhere to the Australian Road Rules in this brochure. It will assist in improving public safety and help keep our children safe.

No Stopping

Aust Road Rule 167



Requirement:

- You must not park or stop in a No Stopping Zone for any reason.
- A yellow line marked on the edge of the road has the same meaning as a No Stopping Zone.

No Parking

Aust Road Rule 168



Please Remember:

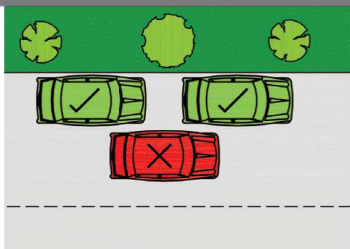
That **No Parking** is intended for immediate drop off and pick up only. You must move your vehicle as quickly as possible. Do not stop or park where it is not safe to do so. If parking is not available drive around the block.

Requirement:

- You can only stop in a No Parking area for the immediate purpose of picking up or dropping off passengers or goods.
- You must not leave the vehicle unattended (no more than 3 metres away).
- You can wait in this location no more than 2 minutes. (without moving)

Double Parking

Aust Road Rule 189



Requirement:

- Drivers must not stop next to a parked vehicle when picking up or dropping off children, not even for a few seconds. This practice is illegal and creates dangerous situations at any time on any street.

School Zones

Aust Road Rule 23

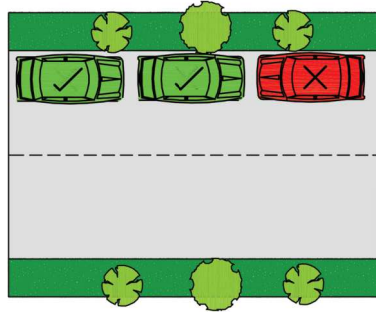


Requirement:

- Drivers must slow their vehicles to 25km/h in a School Zone at any time day or night when a child is present.
- A zigzag white line is also usually marked on the road to let drivers know they are approaching a School Zone.

Wrong Way

Aust Road Rule 208 (3)

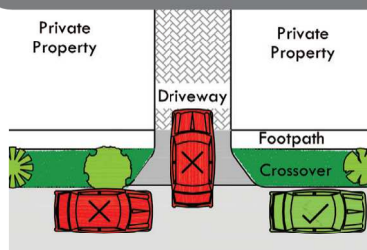


Requirement:

- You must park your vehicle facing the same direction in which you're travelling, which is of course the side you would lawfully drive on. To otherwise is a huge safety risk for you and other road users, especially when you are re-entering the traffic flow from the wrong direction.

Driveways

Aust Road Rule 198 (2)

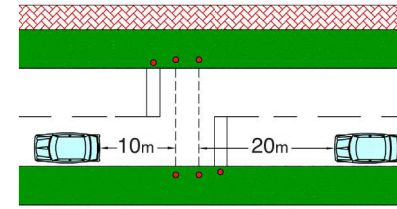


Requirement:

- You may park so that the front of your vehicle is level with the approach or the back is level with the departure side of a driveway to any private or public property so that vehicles can enter and depart.

School Crossings

Aust Road Rule 171

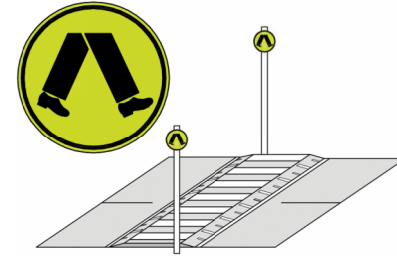


Requirement:

- You cannot stop within 20m of the approach side or 10m of the departure side of a school crossing.
- This Road Rule applies to all pedestrian crossings.

Wombat Crossings

Aust Road Rule 81

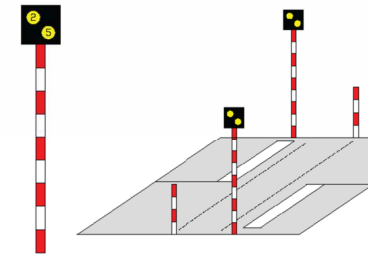


Requirement:

- A Wombat Crossing consists of a wide road hump marked with thick white stripes and round yellow signs.
- When a pedestrian is crossing or about to cross the road drivers must give way.

Koala Crossings

Aust Road Rule 80

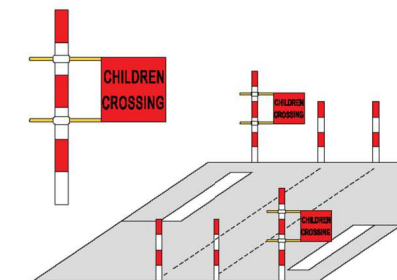


Requirement:

- A Koala Crossing consists of two yellow flashing lights mounted on red and white striped poles.
- A 25km/h speed limit applies when the lights are flashing.
- A driver must give way to any pedestrian.

Emu Crossings

Aust Road Rule 80



Requirement:

- An Emu Crossing has a red 'Children Crossing' flag displayed on red and white striped posts.
- The speed restriction of 25km/h applies at any time when a child is present so slow down to be safe and take care of children!